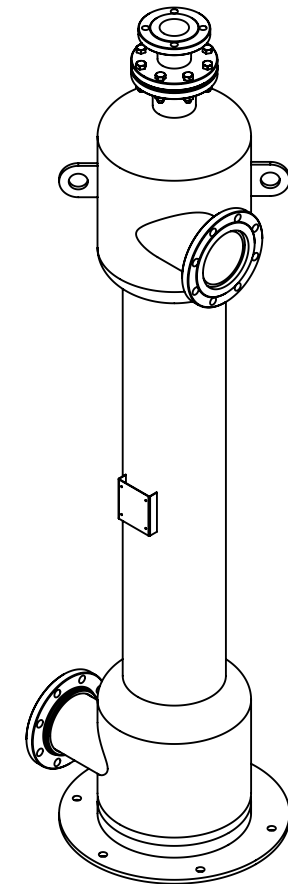


NOTES:


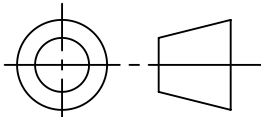
1. MATERIAL OF CONSTRUCTION: TYPE 316L, STAINLESS STEEL
2. MTR/HEAT NUMBERS ARE PROVIDED FOR ALL MATERIALS AND SHALL MEET APPLICABLE MATERIAL SPECIFICATIONS.
3. FLANGE BOLT HOLES TO STRADDLE COMMON CENTERLINES, UNLESS OTHERWISE NOTED.
4. MAXIMUM PRESSURE: 80 PSI (5.52 BAR)
5. MAXIMUM OPERATING TEMPERATURE: 180°F (82.2°C) AT MAX. PRESSURE
6. PRESSURE LOSS: 1-4 PSID (.07-.28 BAR) AT RATED FLOW
7. RATED FLOW: 400-800 GPM (91-182 M³/HR)
8. EMPTY WEIGHT (DRY): APPROXIMATELY 528 LBS. (239 KG)
9. WATER VOLUME: 46 GALLONS (175 LITERS)
10. INLET/OUTLET CONNECTION:
6" NOMINAL DIA., ANSI B16.5, CLASS 150, RAISED FACE, SLIP-ON FLANGE
11. VENT CONNECTION:
3" NOMINAL DIA., ANSI B16.5, CLASS 150, RAISED FACE, SLIP-ON FLANGE
12. WELDING JOINTS TO BE COMPLETE JOINT PENETRATION, WHERE POSSIBLE.
13. HYDROTESTING MAY BE PERFORMED IN ACCORDANCE WITH MAZZEI SOP NO. 6090.
14. DYE PENETRANT TESTING MAY BE PERFORMED IN ACCORDANCE WITH MAZZEI SOP NO. 6095.
15. CLEANED FOR PASSIVATION PER ASTM A380 GUIDELINES.
16. PASSIVATED PER ASTM A967 SPECIFICATION.
17. FINISH: EXTERIOR BEAD BLASTED.
18. WELD MAP, NON DESTRUCTIVE TESTING (NDT), CLEANING AND INSPECTION REPORTS TO BE PROVIDED BY MAZZEI.

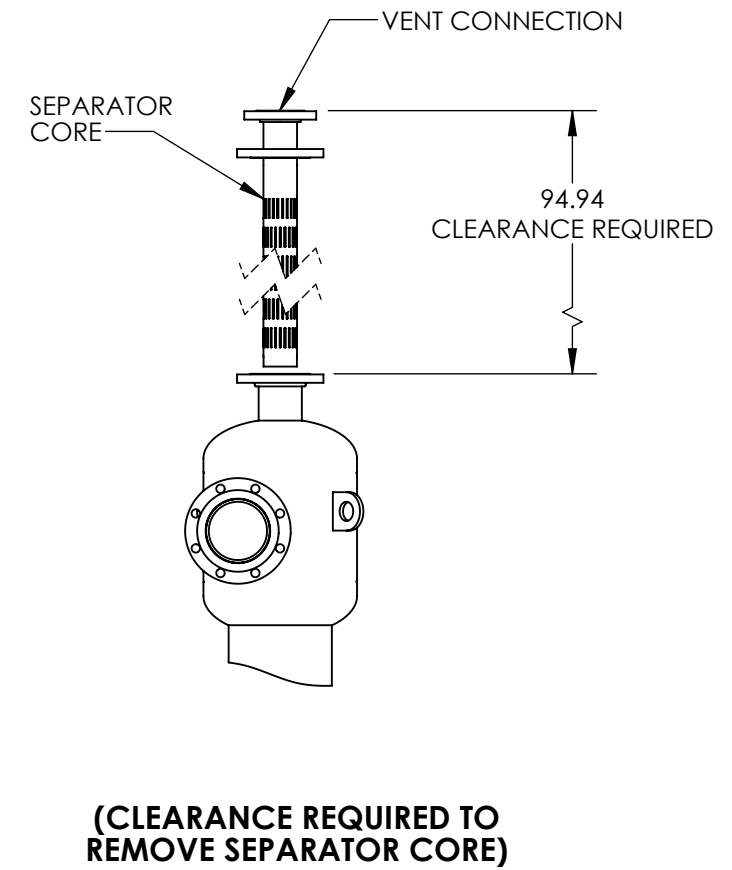
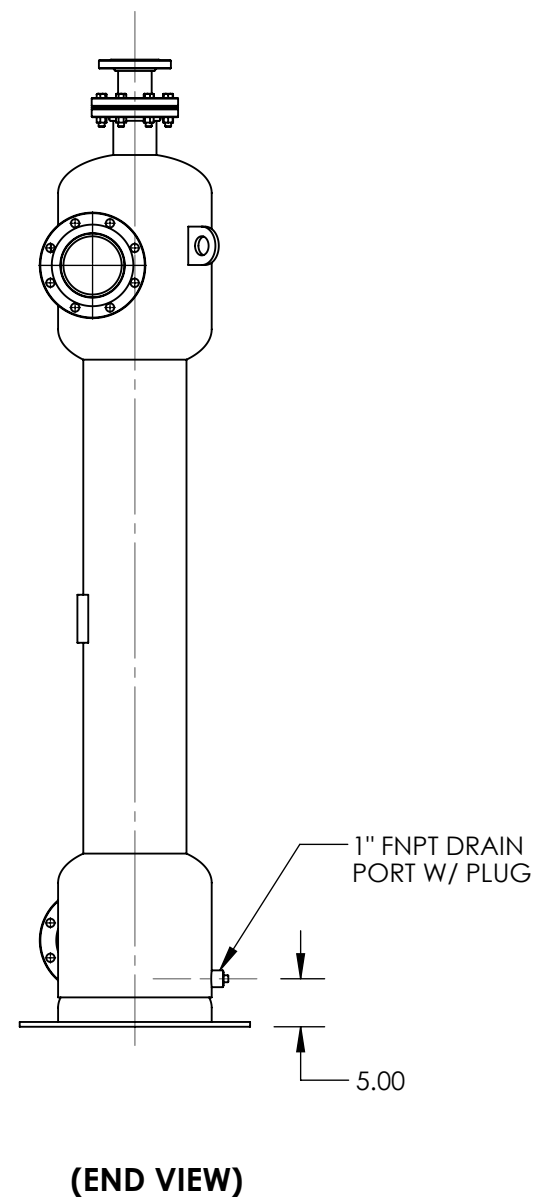
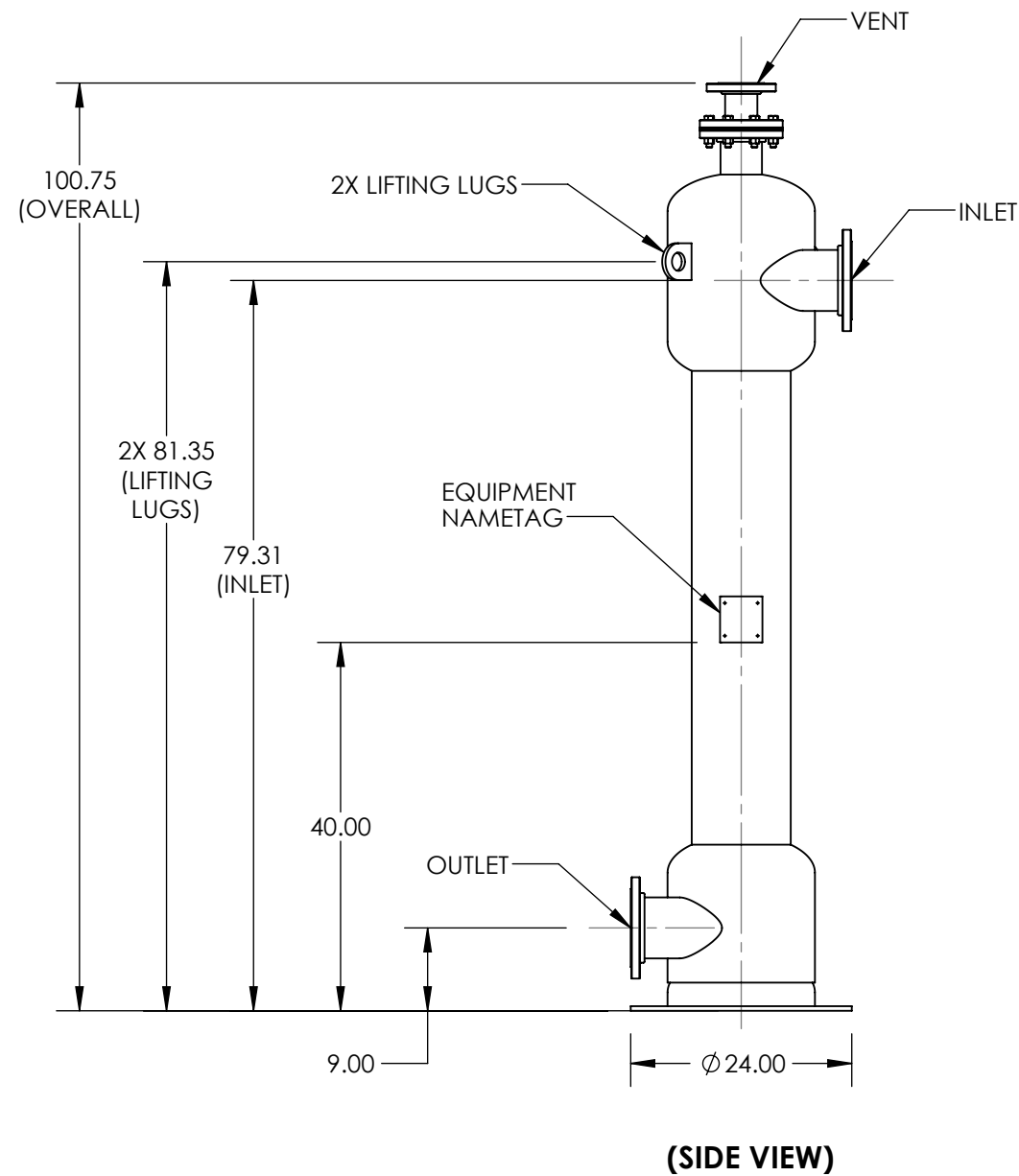
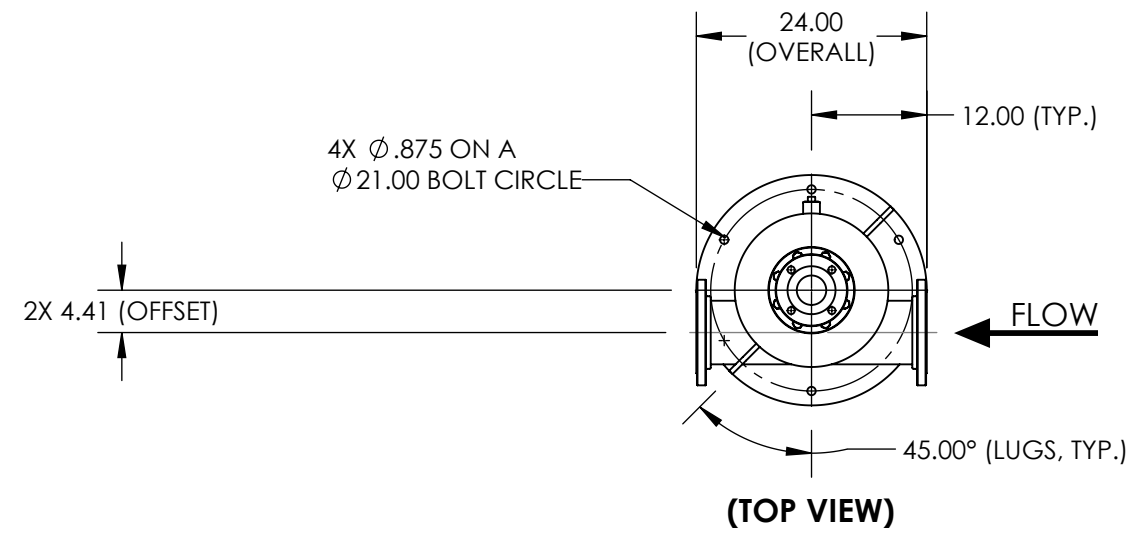
REVISIONS			
REV.	DESCRIPTION	DATE	APPROVED
NC	RELEASED FOR SUBMITTAL.	2/27/2015	J. BENNETT
A	UPDATED DRAWING NOTES & FORMAT.	4/22/2015	J. BENNETT




(ISOMETRIC VIEW)
(FOR REFERENCE ONLY)

SUBMITTAL DRAWING

SUBMITTAL NOTICE		CONFIDENTIALITY NOTICE		UNLESS OTHERWISE SPECIFIED DIM ARE IN INCHES TOL ON ANGLE ± .50° ALL DIMS ± 1 INTERPRET DIM AND TOL PER ASME Y14.5M-1994		APPROVALS		DATE		 MAZZEI INJECTOR CO., LLC 500 ROOSTER DRIVE BAKERSFIELD, CA 93307 PHONE: (661) 363-6500 FAX: (661)363-7500 WWW.MAZZEI.NET									
ANY RECOMMENDATIONS FOR PRODUCT AND/OR SYSTEM DESIGN, WHETHER CONTAINED IN A DOCUMENT, WITHIN THIS DRAWING, COMMUNICATED BY ELECTRONIC MEANS OR GIVEN VERBALLY, ARE INTENDED SOLELY AS GUIDELINES TO ACTUAL SYSTEM DESIGN. SAID RECOMMENDATIONS ARE BASED UPON INFORMATION SUPPLIED BY OTHERS, THE ACCURACY OF WHICH IS BEYOND VERIFICATION BY MAZZEI INJECTOR CO. LLC. THEREFORE MAZZEI CANNOT AND DOES NOT WARRANT THE SUITABILITY OF ITS PRODUCTS FOR A PARTICULAR SERVICE NOR THE PERFORMANCE OF ANY SYSTEM CONTAINING COMPONENTS MADE OR SOLD BY MAZZEI.		THE INFORMATION CONTAINED IN THIS DRAWING IS THE SOLE PROPERTY OF MAZZEI INJECTOR COMPANY LLC. ANY REPRODUCTION IN PART OR AS A WHOLE WITHOUT THE WRITTEN PERMISSION OF MAZZEI IS STRICTLY PROHIBITED.		THIRD ANGLE PROJECTION 		DRAWN: T. JOHNS		2/27/2015				DESCRIPTION: DEGAS SEPERATOR; DSF06030AAA00A							
DRAWING MAY NOT BE PRINTED FULL SIZE DO NOT SCALE						CHECKED: J. PEREZ		2/27/2015		APPROVED: J. BENNETT				2/27/2015					
				QA: -		CUSTOMER APPROVAL: -		CUSTOMER: N/A		SIZE: B				JOB NO.: N/A		DRAWING NUMBER: DSF06030AAA00A-SUB		REV: A	
				SCALE: NONE		WEIGHT: 528 LBS		SHEET: 1 OF 2											



		MAZZEI INJECTOR CO., LLC 500 ROOSTER DRIVE BAKERSFIELD, CA 93307 PHONE: (661) 363-6500 FAX: (661)363-7500 WWW.MAZZEI.NET	
		DESCRIPTION: DEGAS SEPERATOR; DSF06030AAA00A	
SIZE:	JOB NO.:	DRAWING NUMBER:	REV:
B	N/A	DSF06030AAA00A-SUB	A
SCALE:	WEIGHT:	SHEET:	
1:20	528 LBS	2 OF 2	