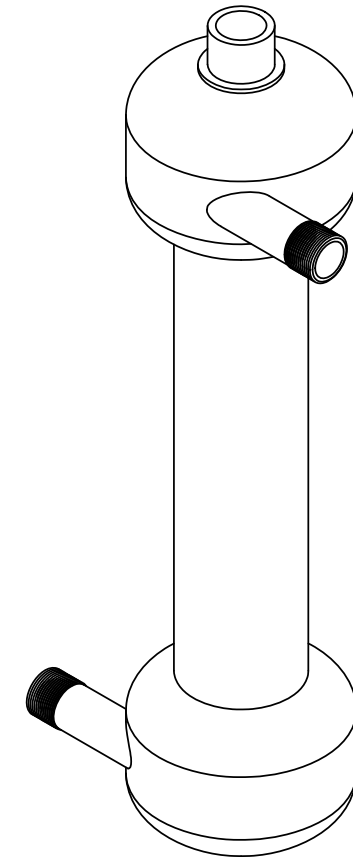


NOTES:


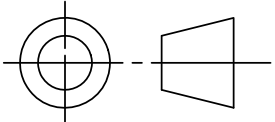
1. MATERIAL OF CONSTRUCTION: TYPE 316L, STAINLESS STEEL
2. MTR/HEAT NUMBERS ARE PROVIDED FOR ALL MATERIALS AND SHALL MEET APPLICABLE MATERIAL SPECIFICATIONS.
3. MAXIMUM PRESSURE: 80 PSI (5.5 BAR)
4. MAXIMUM OPERATING TEMPERATURE: 180 °F (82.2 °C)
5. PRESSURE LOSS: 1 - 4 PSID (.07 - .28 BAR) AT RATED FLOW
6. RATED FLOW: 5 - 50 GPM (1.1 - 11.4 M³/HR)
7. EMPTY WEIGHT (DRY): APPROXIMATELY 30 LBS. (14 KG)
8. WATER VOLUME: 1.44 GALLONS (5.5 LITERS)
9. INLET/OUTLET CONNECTION:
1.00" DIA., ANSI B1.20.1, MALE NATIONAL PIPE THREAD (MNPT)
10. VENT CONNECTION:
1.00" DIA., ANSI B1.20.1, FEMALE NATIONAL PIPE THREAD (FNPT)
11. FINISH: GLASS BLAST EXTERIOR ONLY
12. HYDROSTATICALLY TESTED TO 80 PSIG (5.5 BAR)
13. WELDING JOINTS TO BE COMPLETE PENETRATION, WHERE POSSIBLE.
14. DYE PENETRANT TESTING IN ACCORDANCE WITH ASME B31.3 NORMAL SERVICE RECOMMENDATIONS WILL BE PERFORMED ON A MINIMUM OF 20% OF LINEAR LENGTH OF WELDS; OR HYDROSTATIC TESTING WILL BE PERFORMED AS PART OF MAZZEI'S NON-DESTRUCTIVE TESTING PROCEDURE.
15. CLEANED FOR PASSIVATION PER ASTM A380 GUIDELINES.
16. PASSIVATED PER ASTM A967 SPECIFICATION.
17. WELD MAP, NON DESTRUCTIVE TESTING (NDT), CLEANING AND INSPECTION REPORTS TO BE PROVIDED BY MAZZEI.
18. MAZZEI RECOMMENDS INSTALLING THE DEGAS SEPARATOR PER THE O&M MANUAL GUIDELINES.

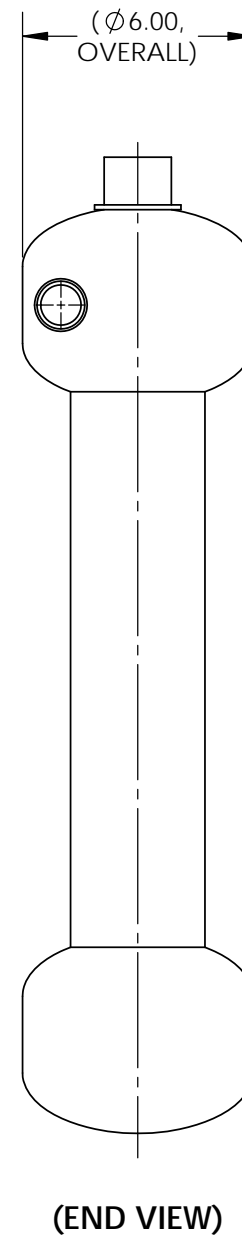
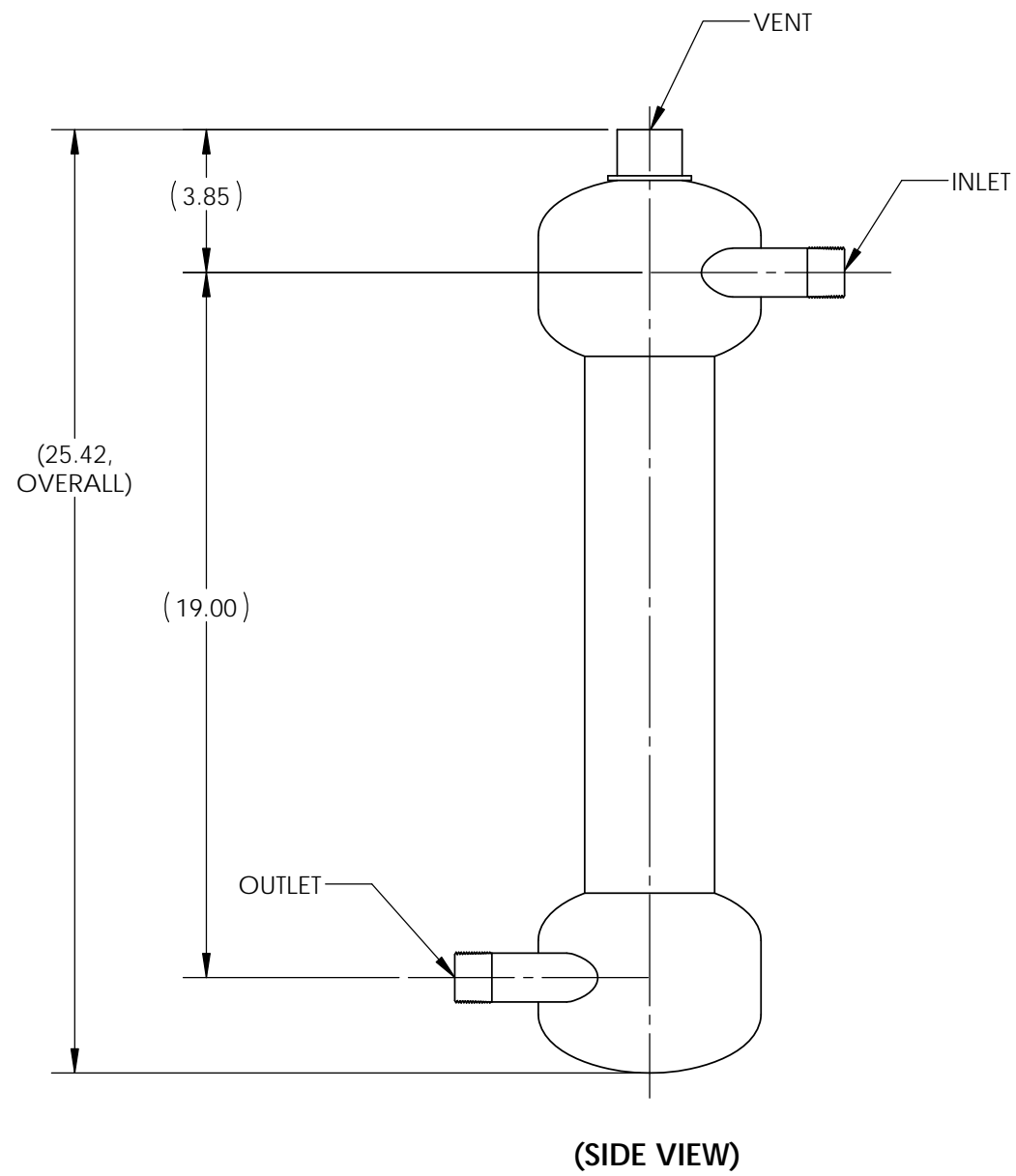
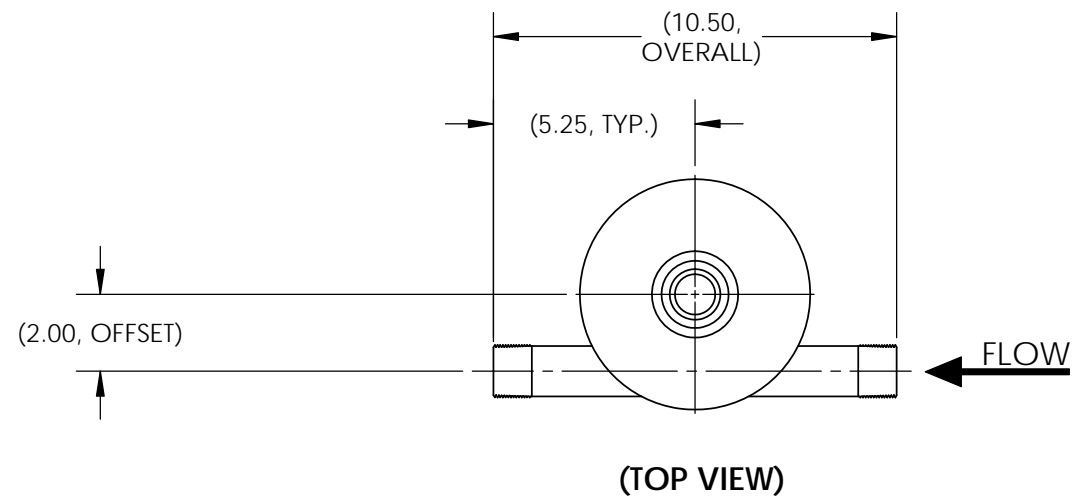
REVISIONS			
REV.	DESCRIPTION	DATE	APPROVED
NC	RELEASED FOR SUBMITTAL.	11/28/2012	P. BANKOWSKI




(ISOMETRIC VIEW)
(FOR REFERENCE ONLY)

SUBMITTAL DRAWING

SUBMITTAL NOTICE	CONFIDENTIALITY NOTICE	UNLESS OTHERWISE SPECIFIED DIM ARE IN INCHES TOL ON ANGLE ± .1/2° 1 PL ± .125 2 PL ± .060 3 PL ± .030 INTERPRET DIM AND TOL PER ASME Y14.5M-1994	APPROVALS	DATE	 MAZZEI INJECTOR CO., LLC 500 ROOSTER DRIVE BAKERSFIELD, CA 93307 PHONE: (661) 363-6500 FAX: (661)363-7500 WWW.MAZZEI.NET								
ANY RECOMMENDATIONS FOR PRODUCT AND/OR SYSTEM DESIGN, WHETHER CONTAINED IN A DOCUMENT, WITHIN THIS DRAWING, COMMUNICATED BY ELECTRONIC MEANS OR GIVEN VERBALLY, ARE INTENDED SOLELY AS GUIDELINES TO ACTUAL SYSTEM DESIGN. SAID RECOMMENDATIONS ARE BASED UPON INFORMATION SUPPLIED BY OTHERS, THE ACCURACY OF WHICH IS BEYOND VERIFICATION BY MAZZEI INJECTOR CO. LLC. THEREFOR MAZZEI CANNOT AND DOES NOT WARRANT THE SUITABILITY OF ITS PRODUCTS FOR A PARTICULAR SERVICE NOR THE PERFORMANCE OF ANY SYSTEM CONTAINING COMPONENTS MADE OR SOLD BY MAZZEI.	THE INFORMATION CONTAINED IN THIS DRAWING IS THE SOLE PROPERTY OF MAZZEI INJECTOR COMPANY LLC. ANY REPRODUCTION IN PART OR AS A WHOLE WITHOUT THE WRITTEN PERMISSION OF MAZZEI IS STRICTLY PROHIBITED.	THIRD ANGLE PROJECTION 	DRAWN: T. JOHNS	11/28/2012		DEGAS SEPARATOR; DSF01010ACF000							
			CHECKED: P. BANKOWSKI	11/28/2012									
			APPROVED: P. BANKOWSKI	11/28/2012									
			QA: -										
			CUSTOMER APPROVAL: -										
	DRAWING MAY NOT BE PRINTED FULL SIZE DO NOT SCALE		CUSTOMER: NA		<table border="1"> <tr> <td>SIZE: B</td> <td>JOB NO.: NA</td> <td>DRAWING NUMBER: DSF01010ACF000-SUB</td> <td>REV.: NC</td> </tr> <tr> <td>SCALE: NONE</td> <td>WEIGHT: 30 LBS</td> <td>SHEET: 1 OF 2</td> <td></td> </tr> </table>	SIZE: B	JOB NO.: NA	DRAWING NUMBER: DSF01010ACF000-SUB	REV.: NC	SCALE: NONE	WEIGHT: 30 LBS	SHEET: 1 OF 2	
SIZE: B	JOB NO.: NA	DRAWING NUMBER: DSF01010ACF000-SUB	REV.: NC										
SCALE: NONE	WEIGHT: 30 LBS	SHEET: 1 OF 2											

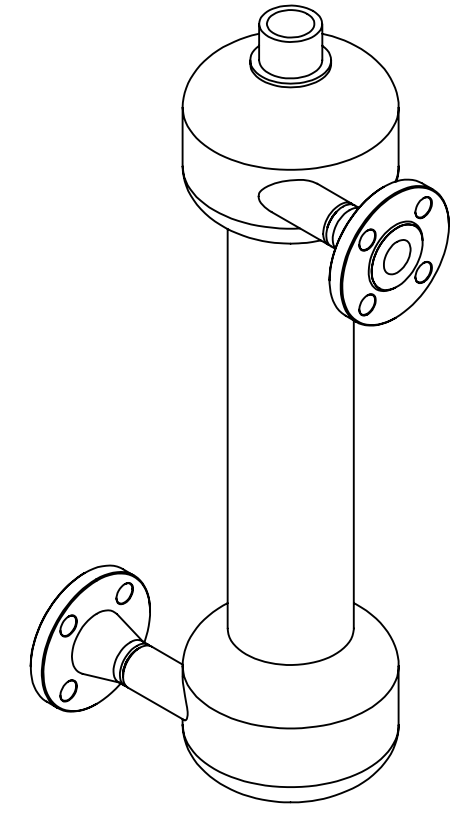


		MAZZEI INJECTOR CO., LLC 500 ROOSTER DRIVE BAKERSFIELD, CA 93307 PHONE: (661) 363-6500 FAX: (661)363-7500 WWW.MAZZEI.NET	
		TITLE: DEGAS SEPARATOR; DSF01010ACF000	
SIZE:	JOB NO.:	DRAWING NUMBER:	REV.:
B	NA	DSF01010ACF000-SUB	NC
SCALE:	WEIGHT:	SHEET:	
1:5	30 LBS	2 OF 2	

NOTES:

1. MATERIAL OF CONSTRUCTION: TYPE 316L, STAINLESS STEEL
2. MTR/HEAT NUMBERS ARE PROVIDED FOR ALL MATERIALS AND SHALL MEET APPLICABLE MATERIAL SPECIFICATIONS.
3. FLANGE BOLT HOLES TO STRADDLE COMMON CENTERLINES, UNLESS OTHERWISE NOTED.
4. MAXIMUM PRESSURE: 80 PSI (5.5 BAR)
5. MAXIMUM OPERATING TEMPERATURE: 180°F (82.2°C)
6. PRESSURE LOSS: 1 - 4 PSID (.07 - .28 BAR) AT RATED FLOW
7. RATED FLOW: 5 - 50 GPM (1.1 - 11.4 M³/HR)
8. EMPTY WEIGHT (DRY): APPROXIMATELY 35 LBS. (18 KG)
9. WATER VOLUME: 1.44 GALLONS (5.5 LITERS)
10. INLET/OUTLET CONNECTION:
1.00" DIA., ANSI B16.5, CLASS 150, SCHED. 40, RAISED FACE, WELD NECK FLANGE
11. VENT CONNECTION:
1.00" DIA., ANSI B1.20.1, FEMALE NATIONAL PIPE THREAD (FNPT)
12. FINISH: GLASS BLAST EXTERIOR ONLY
13. WELDING JOINTS TO BE COMPLETE PENETRATION, WHERE POSSIBLE.
14. DYE PENETRANT TESTING IN ACCORDANCE WITH B31.3 NORMAL SERVICE RECOMMENDATIONS WILL BE PERFORMED ON A MINIMUM OF 20% OF LINEAR LENGTH OF WELDS; OR HYDROSTATIC TESTING WILL BE PERFORMED AS PART OF MAZZEI'S NON-DESTRUCTIVE TESTING PROCEDURE.
15. CLEANED FOR PASSIVATION PER ASTM A380 GUIDELINES.
16. PASSIVATED PER ASTM A967 SPECIFICATION.
17. WELD MAP, NON DESTRUCTIVE TESTING (NDT), CLEANING AND INSPECTION REPORTS TO BE PROVIDED BY MAZZEI.
18. MAZZEI RECOMMENDS INSTALLING THE DEGAS SEPARATOR PER THE O&M MANUAL GUIDELINES.

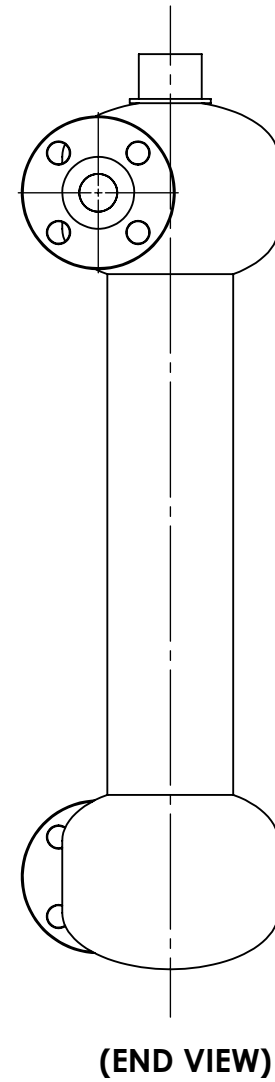
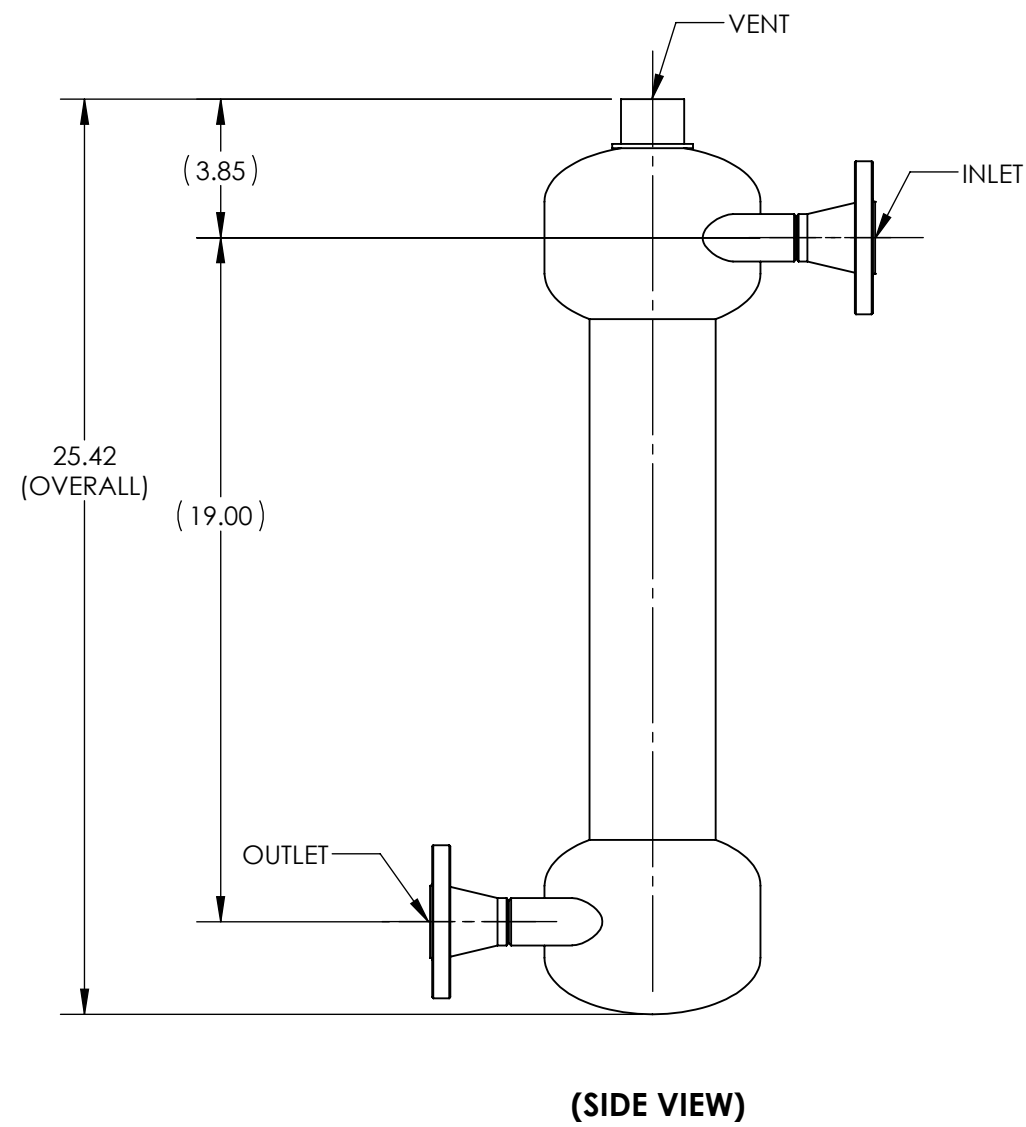
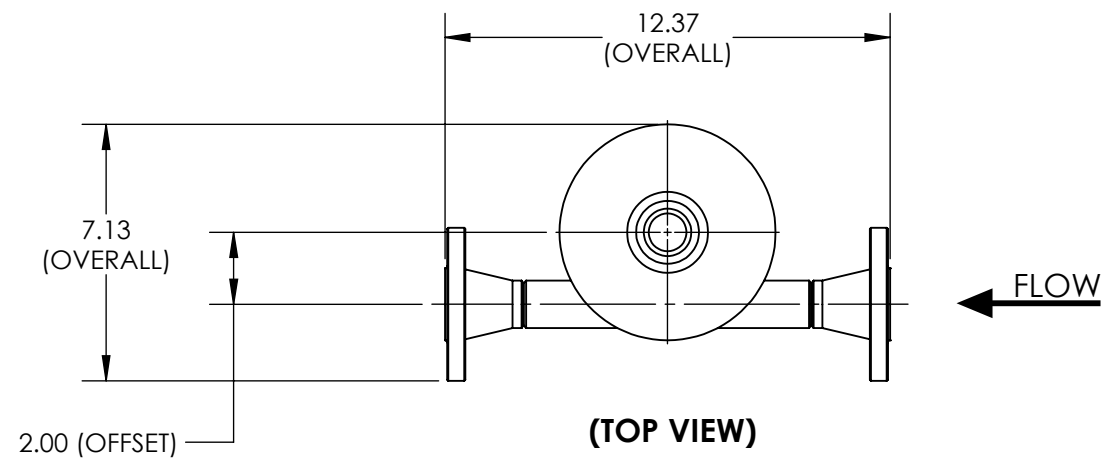
REVISIONS			
REV.	DESCRIPTION	DATE	APPROVED
NC	RELEASED FOR SUBMITTAL.	10/5/2015	J. BENNETT




(ISOMETRIC VIEW)
(FOR REFERENCE ONLY)

SUBMITTAL DRAWING

SUBMITTAL NOTICE	CONFIDENTIALITY NOTICE	UNLESS OTHERWISE SPECIFIED DIM ARE IN INCHES TOL ON ANGLE ± .1/2° 1 PL ± .125 2 PL ± .060 3 PL ± .030 INTERPRET DIM AND TOL PER ASME Y14.5M-1994	APPROVALS	DATE		MAZZEI INJECTOR CO., LLC 500 ROOSTER DRIVE BAKERSFIELD, CA 93307 PHONE: (661) 363-6500 FAX: (661)363-7500 WWW.MAZZEI.NET			
ANY RECOMMENDATIONS FOR PRODUCT AND/OR SYSTEM DESIGN, WHETHER CONTAINED IN A DOCUMENT, WITHIN THIS DRAWING, COMMUNICATED BY ELECTRONIC MEANS OR GIVEN VERBALLY, ARE INTENDED SOLELY AS GUIDELINES TO ACTUAL SYSTEM DESIGN. SAID RECOMMENDATIONS ARE BASED UPON INFORMATION SUPPLIED BY OTHERS, THE ACCURACY OF WHICH IS BEYOND VERIFICATION BY MAZZEI INJECTOR CO., LLC. THEREFOR MAZZEI CANNOT AND DOES NOT WARRANT THE SUITABILITY OF ITS PRODUCTS FOR A PARTICULAR SERVICE NOR THE PERFORMANCE OF ANY SYSTEM CONTAINING COMPONENTS MADE OR SOLD BY MAZZEI.	THE INFORMATION CONTAINED IN THIS DRAWING IS THE SOLE PROPERTY OF MAZZEI INJECTOR COMPANY LLC. ANY REPRODUCTION IN PART OR AS A WHOLE WITHOUT THE WRITTEN PERMISSION OF MAZZEI IS STRICTLY PROHIBITED.	THIRD ANGLE PROJECTION 	DRAWN: T. JOHNS	7/21/2013		TITLE: DEGAS SEPARATOR; DSF01010AAF000			
			CHECKED: J. BENNETT	10/5/2015					
			APPROVED: J. BENNETT	10/5/2015	SIZE: B	JOB NO.: NA	DRAWING NUMBER: DSF01010AAF000-SUB	REV: NC	
	DRAWING MAY NOT BE PRINTED FULL SIZE DO NOT SCALE		QA: -		SCALE: NONE	WEIGHT: 35 LBS	SHEET: 1 OF 2		
			CUSTOMER APPROVAL: -						
			CUSTOMER: NA						

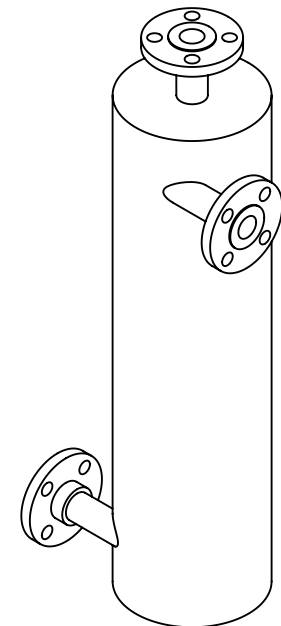


		MAZZEI INJECTOR CO., LLC 500 ROOSTER DRIVE BAKERSFIELD, CA 93307 PHONE: (661) 363-6500 FAX: (661)363-7500 WWW.MAZZEI.NET	
TITLE: DEGAS SEPARATOR; DSF01010AAF000			
SIZE:	JOB NO.:	DRAWING NUMBER:	REV:
B	NA	DSF01010AAF000-SUB	NC
SCALE:	WEIGHT:	SHEET:	
3:16	35 LBS	2 OF 2	

NOTES:


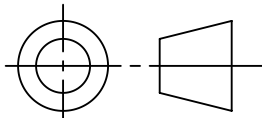
1. MATERIAL OF CONSTRUCTION: CHLORINATED POLYVINYL CHLORIDE (CPVC)/FIBER REINFORCED POLYMER (FRP)
2. MAXIMUM PRESSURE: 80 PSI (5.52 BAR)
3. MAXIMUM OPERATING TEMPERATURE: 73°F (22.8°C) @ MAX. PRESSURE
4. PRESSURE LOSS: 3 - 12 PSID (.2 - .8 BAR) AT RATED FLOW
5. RATED FLOW: 5 - 50 GPM (1.1 - 11.4 M³/HR)
6. EMPTY WEIGHT (DRY): APPROXIMATELY 17 LBS. (7.7 KG)
7. WATER VOLUME: 2.62 GALLONS (9.91 LITERS)
8. INLET/OUTLET CONNECTION:
1" NOMINAL DIA., CLASS 150, VAN STONE STYLE FLANGE
9. VENT CONNECTION:
1" NOMINAL DIA., CLASS 150, VAN STONE STYLE FLANGE
10. FINISH: FIBERGLASS WRAPPED EXTERIOR ONLY
11. HIGH FREQUENCY SPARK TEST REPORT OF HOT AIR WELDS CAN BE PROVIDED BY MAZZEI UPON REQUEST.

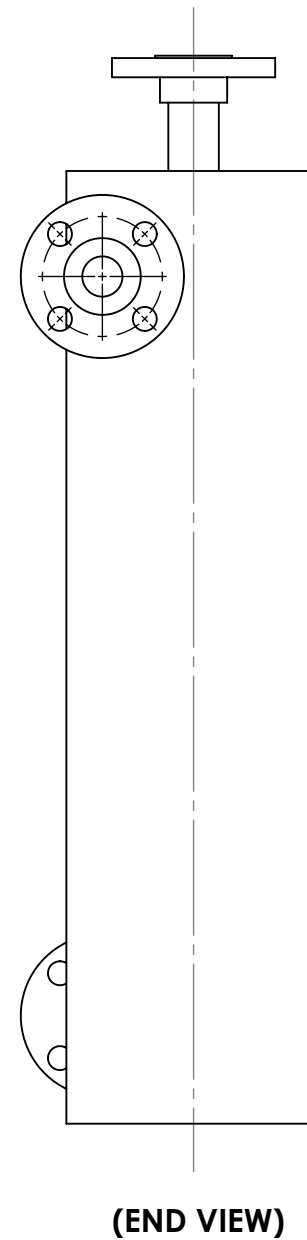
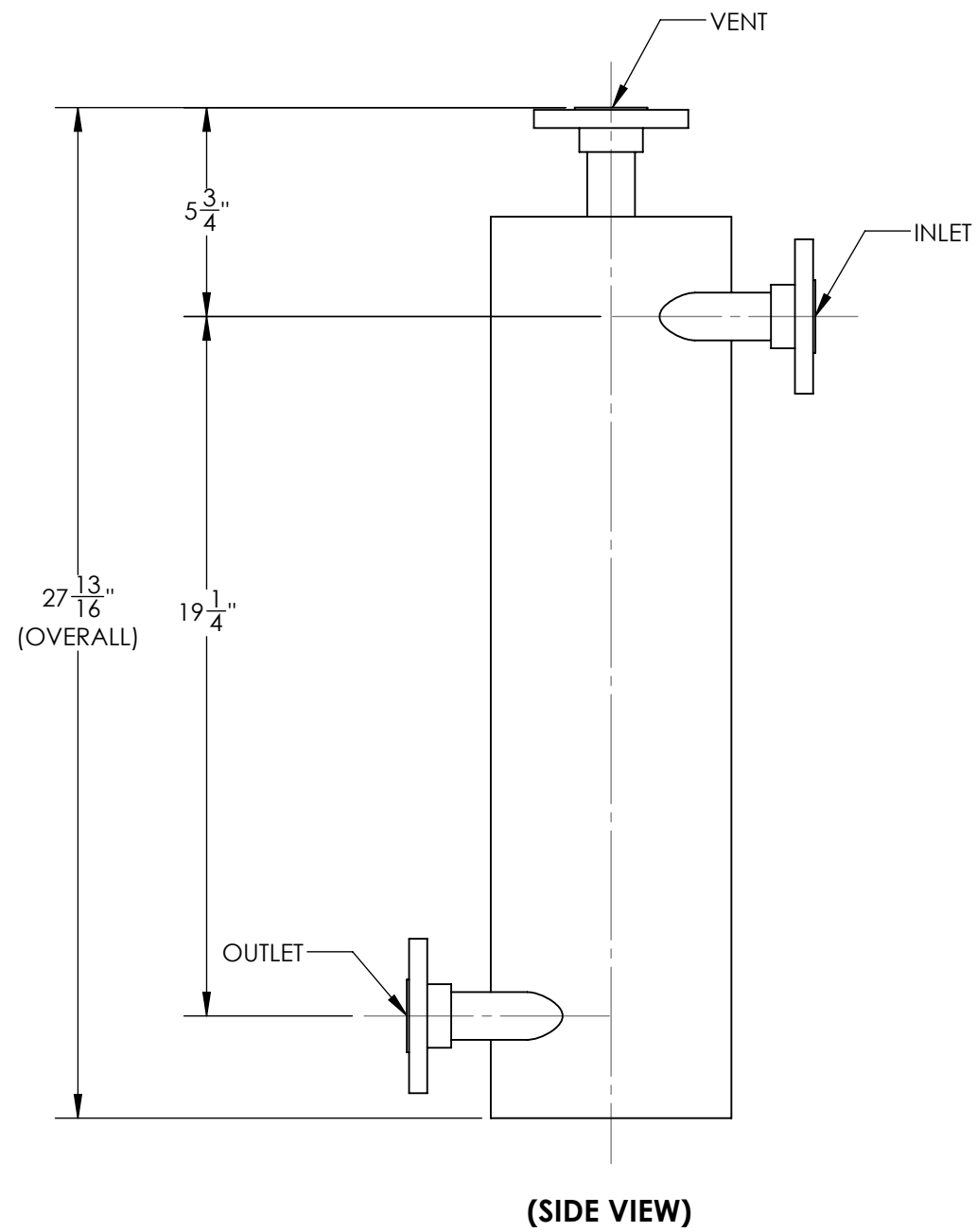
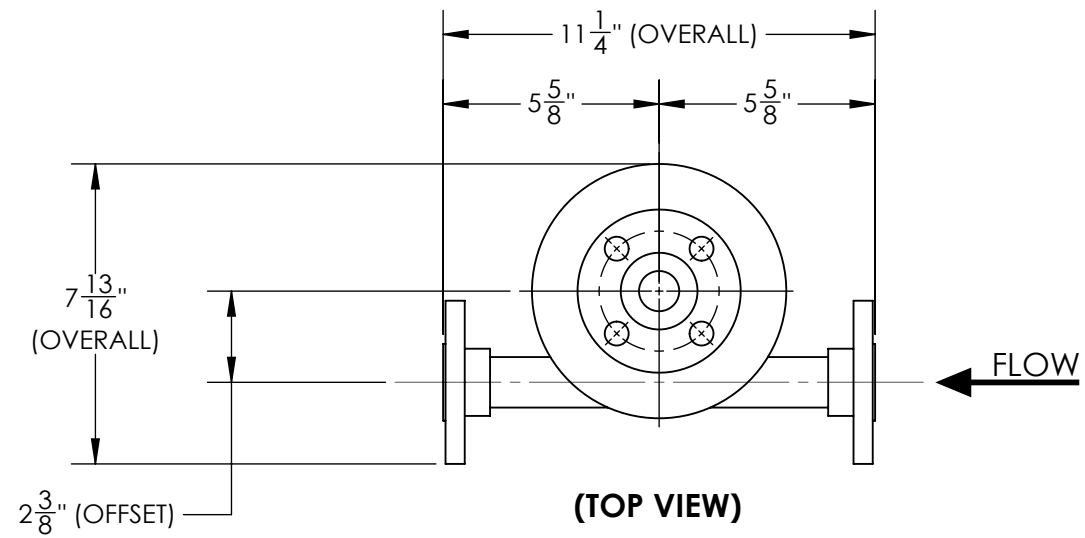
REVISIONS			
REV.	DESCRIPTION	DATE	APPROVED
NC	RELEASED FOR SUBMITTAL.	2/18/2015	J. BENNETT




(ISOMETRIC VIEW)
(FOR REFERENCE ONLY)

SUBMITTAL DRAWING

SUBMITTAL NOTICE		CONFIDENTIALITY NOTICE		UNLESS OTHERWISE SPECIFIED DIM ARE IN INCHES TOL ON ANGLE ± .50° ALL DIMS ± 1" INTERPRET DIM AND TOL PER ASME Y14.5M-1994		APPROVALS		DATE		 MAZZEI INJECTOR CO., LLC 500 ROOSTER DRIVE BAKERSFIELD, CA 93307 PHONE: (661) 363-6500 FAX: (661)363-7500 WWW.MAZZEI.NET									
ANY RECOMMENDATIONS FOR PRODUCT AND/OR SYSTEM DESIGN, WHETHER CONTAINED IN A DOCUMENT, WITHIN THIS DRAWING, COMMUNICATED BY ELECTRONIC MEANS OR GIVEN VERBALLY, ARE INTENDED SOLELY AS GUIDELINES TO ACTUAL SYSTEM DESIGN. SAID RECOMMENDATIONS ARE BASED UPON INFORMATION SUPPLIED BY OTHERS, THE ACCURACY OF WHICH IS BEYOND VERIFICATION BY MAZZEI INJECTOR CO. LLC. THEREFORE MAZZEI CANNOT AND DOES NOT WARRANT THE SUITABILITY OF ITS PRODUCTS FOR A PARTICULAR SERVICE NOR THE PERFORMANCE OF ANY SYSTEM CONTAINING COMPONENTS MADE OR SOLD BY MAZZEI.		THE INFORMATION CONTAINED IN THIS DRAWING IS THE SOLE PROPERTY OF MAZZEI INJECTOR COMPANY LLC. ANY REPRODUCTION IN PART OR AS A WHOLE WITHOUT THE WRITTEN PERMISSION OF MAZZEI IS STRICTLY PROHIBITED.		THIRD ANGLE PROJECTION 		DRAWN: T. JOHNS		2/18/2015				DESCRIPTION: DEGAS SEPARATOR; DSF01010KAAFID							
DRAWING MAY NOT BE PRINTED FULL SIZE DO NOT SCALE						CHECKED: J. PEREZ		2/18/2015		APPROVED: J. BENNETT				2/18/2015					
				QA: -		CUSTOMER APPROVAL: -		CUSTOMER: N/A		SIZE: B				JOB NO.: N/A		DRAWING NUMBER: DSF01010KAAFID-SUB		REV: NC	
				SCALE: NONE		WEIGHT: 17 LBS		SHEET: 1 OF 2											



		MAZZEI INJECTOR CO., LLC 500 ROOSTER DRIVE BAKERSFIELD, CA 93307 PHONE: (661) 363-6500 FAX: (661)363-7500 WWW.MAZZEI.NET	
DESCRIPTION: DEGAS SEPARATOR; DSF01010KAAFID			
SIZE:	JOB NO.:	DRAWING NUMBER:	REV:
B	N/A	DSF01010KAAFID-SUB	NC
SCALE:	WEIGHT:	SHEET:	
1:5	17 LBS	2 OF 2	