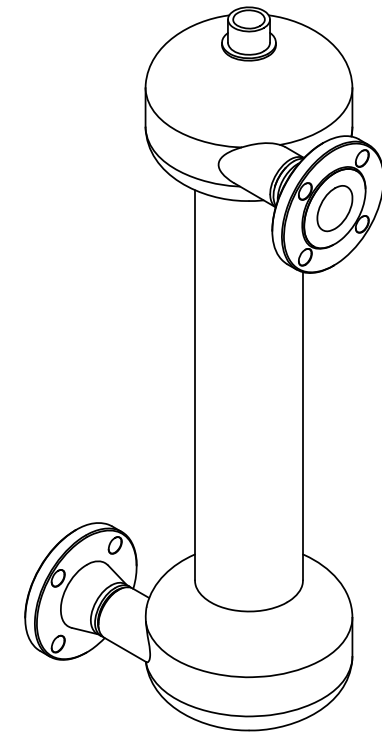


NOTES:


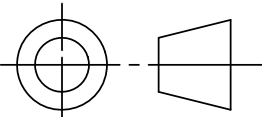
1. MATERIAL OF CONSTRUCTION: TYPE 316L, STAINLESS STEEL
2. MTR/HEAT NUMBERS ARE PROVIDED FOR ALL MATERIALS AND SHALL MEET APPLICABLE MATERIAL SPECIFICATIONS.
3. FLANGE BOLT HOLES TO STRADDLE COMMON CENTERLINES, UNLESS OTHERWISE NOTED.
4. MAXIMUM PRESSURE: 80 PSI (5.5 BAR)
5. MAXIMUM OPERATING TEMPERATURE: 180°F (82.2°C)
6. PRESSURE LOSS: 1 - 4 PSID (.07 - .28 BAR) AT RATED FLOW
7. RATED FLOW: 50 - 150 GPM (11 - 34 M³/HR)
8. EMPTY WEIGHT (DRY): APPROXIMATELY 50 LBS. (23 KG)
9. WATER VOLUME: 3.5 GALLONS (13.4 LITERS)
10. INLET/OUTLET CONNECTION:
2.00" DIA., ANSI B16.5, CLASS 150, SCHED. 40, RAISED FACE WELD-NECK
11. VENT CONNECTION:
1.00" DIA., ANSI B1.20.1, FEMALE NATIONAL PIPE THREAD (FNPT)
12. FINISH: GLASS BLAST EXTERIOR ONLY
13. WELDING JOINTS TO BE COMPLETE PENETRATION, WHERE POSSIBLE.
14. DYE PENETRANT TESTING IN ACCORDANCE WITH ASME B31.3 NORMAL SERVICE RECOMMENDATIONS WILL BE PERFORMED ON A MINIMUM OF 20% OF LINEAR LENGTH OF WELDS; OR HYDROSTATIC TESTING WILL BE PERFORMED AS PART OF MAZZEI'S NON-DESTRUCTIVE TESTING PROCEDURE.
15. CLEANED FOR PASSIVATION PER ASTM A380 GUIDELINES.
16. PASSIVATED PER ASTM A967 SPECIFICATION.
17. WELD MAP, NON DESTRUCTIVE TESTING (NDT), CLEANING AND INSPECTION REPORTS TO BE PROVIDED BY MAZZEI.
18. MAZZEI RECOMMENDS INSTALLING THE DEGAS SEPARATOR PER THE O&M MANUAL GUIDELINES.

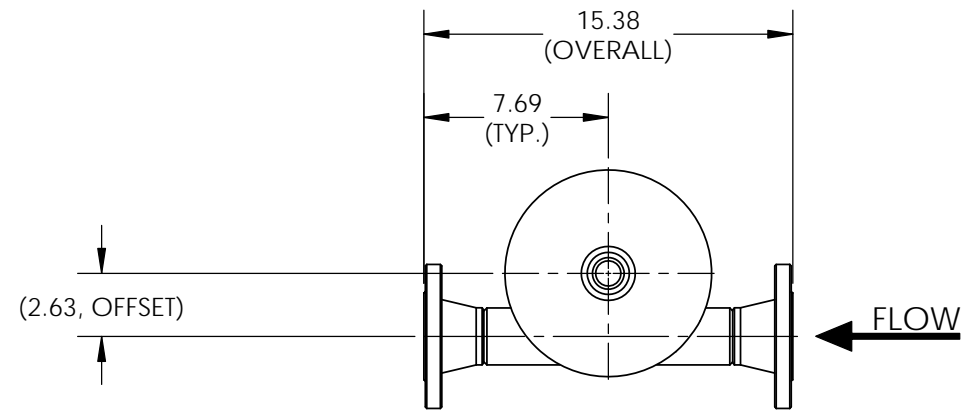
REVISIONS			
REV.	DESCRIPTION	DATE	APPROVED
NC	RELEASED FOR SUBMITTAL.	7/22/2013	P. BANKOWSKI



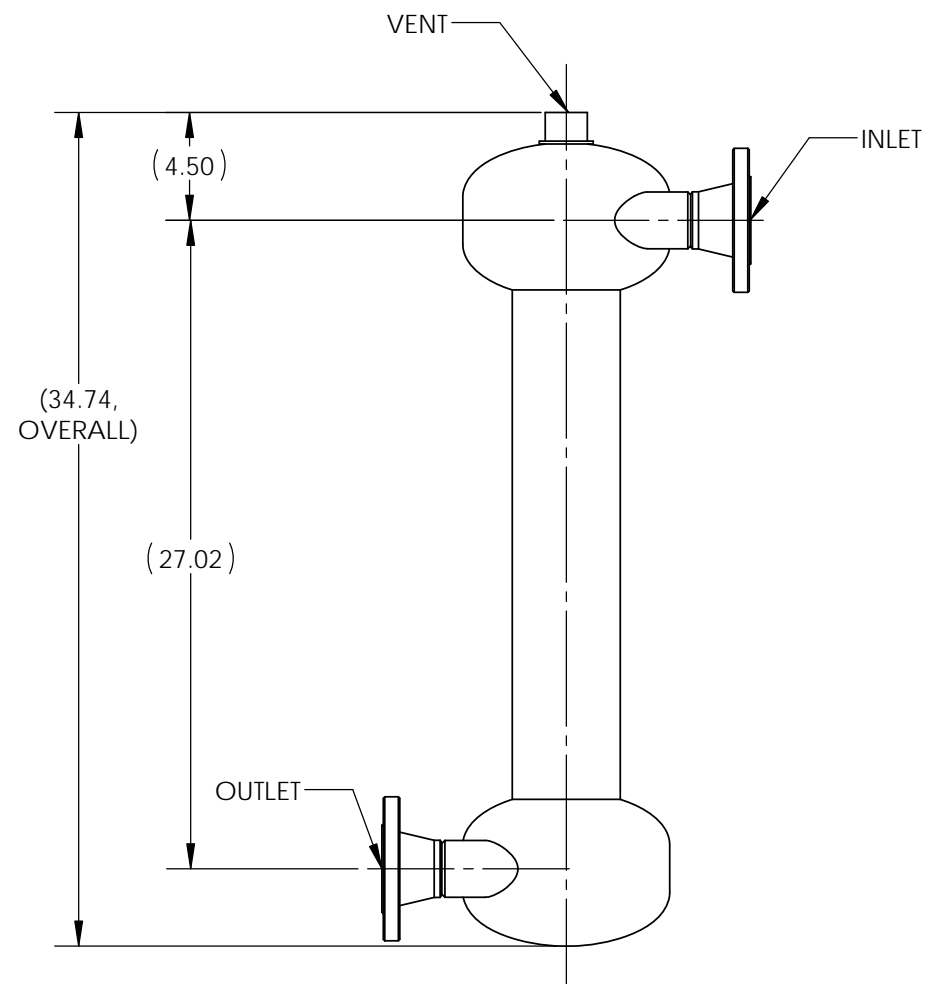
(ISOMETRIC VIEW)
(FOR REFERENCE ONLY)

SUBMITTAL DRAWING

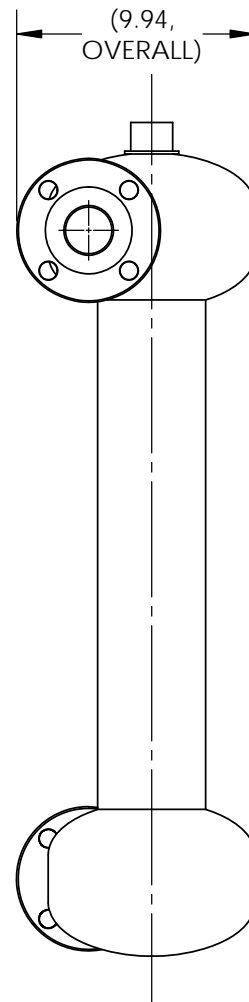
SUBMITTAL NOTICE	CONFIDENTIALITY NOTICE	UNLESS OTHERWISE SPECIFIED DIM ARE IN INCHES TOL ON ANGLE ± .1/2° 1 PL ± .125 2 PL ± .060 3 PL ± .030 INTERPRET DIM AND TOL PER ASME Y14.5M-1994	APPROVALS	DATE	 MAZZEI INJECTOR CO., LLC 500 ROOSTER DRIVE BAKERSFIELD, CA 93307 PHONE: (661) 363-6500 FAX: (661)363-7500 WWW.MAZZEI.NET				
ANY RECOMMENDATIONS FOR PRODUCT AND/OR SYSTEM DESIGN, WHETHER CONTAINED IN A DOCUMENT, WITHIN THIS DRAWING, COMMUNICATED BY ELECTRONIC MEANS OR GIVEN VERBALLY, ARE INTENDED SOLELY AS GUIDELINES TO ACTUAL SYSTEM DESIGN. SAID RECOMMENDATIONS ARE BASED UPON INFORMATION SUPPLIED BY OTHERS, THE ACCURACY OF WHICH IS BEYOND VERIFICATION BY MAZZEI INJECTOR CO. LLC. THEREFOR MAZZEI CANNOT AND DOES NOT WARRANT THE SUITABILITY OF ITS PRODUCTS FOR A PARTICULAR SERVICE NOR THE PERFORMANCE OF ANY SYSTEM CONTAINING COMPONENTS MADE OR SOLD BY MAZZEI.	THE INFORMATION CONTAINED IN THIS DRAWING IS THE SOLE PROPERTY OF MAZZEI INJECTOR COMPANY LLC. ANY REPRODUCTION IN PART OR AS A WHOLE WITHOUT THE WRITTEN PERMISSION OF MAZZEI IS STRICTLY PROHIBITED.	THIRD ANGLE PROJECTION	DRAWN: T. JOHNS	7/21/2013		TITLE: DEGAS SEPARATOR; DSF02010AAF000			
			CHECKED: J. MILLAN	7/22/2013	SIZE: B				
	DRAWING MAY NOT BE PRINTED FULL SIZE DO NOT SCALE		APPROVED: P. BANKOWSKI	7/22/2013	SCALE: NONE	WEIGHT: 50 LBS	SHEET: 1 OF 2		
			QA: -						
			CUSTOMER APPROVAL: -						
			CUSTOMER: NA						



(TOP VIEW)



(SIDE VIEW)



(END VIEW)



MAZZEI INJECTOR CO., LLC

500 ROOSTER DRIVE BAKERSFIELD, CA 93307
 PHONE: (661) 363-6500 FAX: (661)363-7500
 WWW.MAZZEI.NET

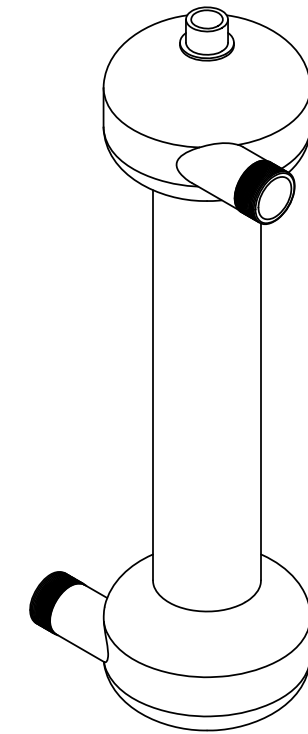
TITLE:
DEGAS SEPARATOR; DSF02010AAF000

SIZE: B	JOB NO.: NA	DRAWING NUMBER: DSF02010AAF000-SUB	REV.: NC
SCALE: 1:8	WEIGHT: 50 LBS	SHEET: 2 OF 2	

NOTES:


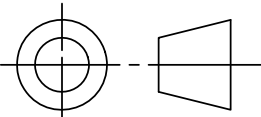
1. MATERIAL OF CONSTRUCTION: TYPE 316L, STAINLESS STEEL
2. MTR/HEAT NUMBERS ARE PROVIDED FOR ALL MATERIALS AND SHALL MEET APPLICABLE MATERIAL SPECIFICATIONS.
3. FLANGE BOLT HOLES TO STRADDLE COMMON CENTERLINES, UNLESS OTHERWISE NOTED.
4. MAXIMUM PRESSURE: 80 PSI (5.5 BAR)
5. MAXIMUM OPERATING TEMPERATURE: 180°F (82.2°C)
6. PRESSURE LOSS: 1 - 4 PSID (.07 - .28 BAR) AT RATED FLOW
7. RATED FLOW: 50 - 150 GPM (11 - 34 M³/HR)
8. EMPTY WEIGHT (DRY): APPROXIMATELY 38 LBS. (17 KG)
9. WATER VOLUME: 3.5 GALLONS (13.4 LITERS)
10. INLET/OUTLET CONNECTION:
2" DIA., ANSI B1.20.1, MALE NATIONAL PIPE THREAD (MNPT)
11. VENT CONNECTION:
1" DIA., ANSI B1.20.1, FEMALE NATIONAL PIPE THREAD (FNPT)
12. FINISH: GLASS BLAST EXTERIOR ONLY
13. HYDROSTATICALLY TESTED TO 80 PSIG (5.5 BAR)
14. WELDING JOINTS TO BE COMPLETE PENETRATION, WHERE POSSIBLE.
15. DYE PENETRATE TESTING IN ACCORDANCE WITH B31.3 NORMAL SERVICE RECOMMENDATIONS WILL BE PERFORMED ON A MINIMUM OF 20% OF LINEAR LENGTH OF WELDS.
16. CLEAN FOR OXYGEN SERVICE PER CGA PUBLICATION G-4.1.
17. CLEAN FOR PASSIVATION PER ASTM A380 GUIDELINES.
18. PASSIVATE PER ASTM A967 SPECIFICATION.
19. WELD MAP, NON DESTRUCTIVE TESTING (NDT), CLEANING AND INSPECTION REPORTS TO BE PROVIDED BY MAZZEI.
20. MAZZEI RECOMMENDS INSTALLING THE DEGAS SEPARATOR PER THE O&M MANUAL GUIDELINES.

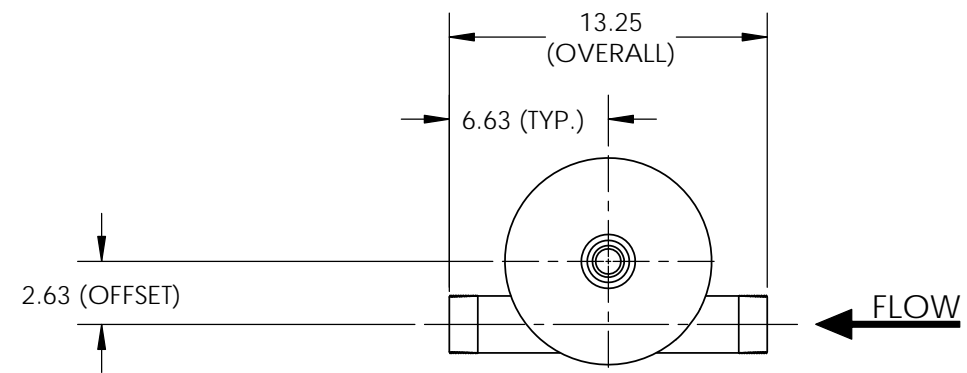
REVISIONS			
REV.	DESCRIPTION	DATE	APPROVED
NC	RELEASED FOR SUBMITTAL.	11/28/2012	P. BANKOWSKI



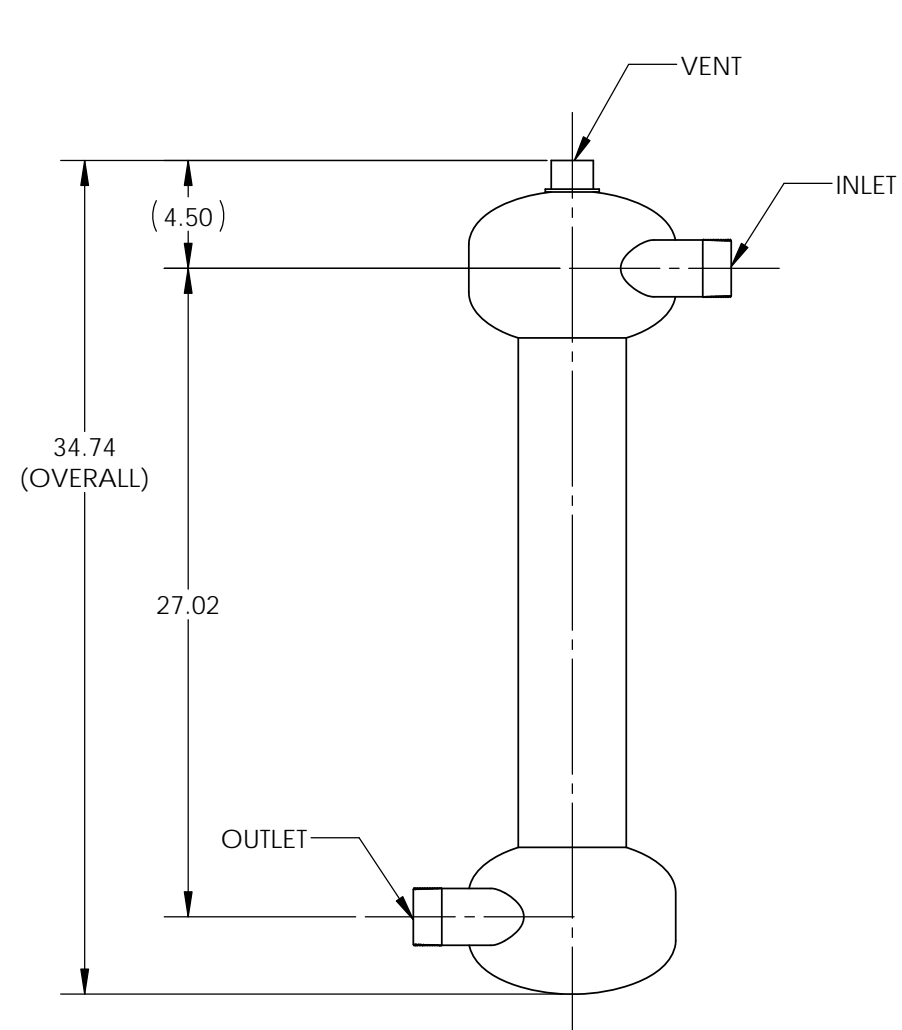
(ISOMETRIC VIEW)
(FOR REFERENCE ONLY)

SUBMITTAL DRAWING

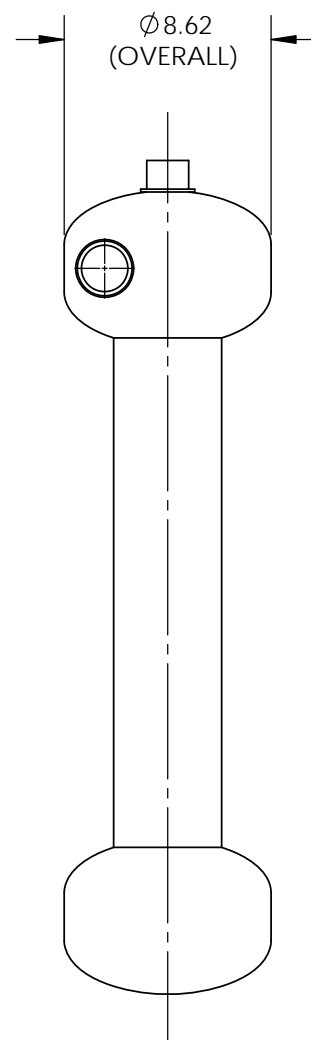
SUBMITTAL NOTICE		CONFIDENTIALITY NOTICE		UNLESS OTHERWISE SPECIFIED DIM ARE IN INCHES TOL ON ANGLE ± .1/2° 1 PL ± .125 2 PL ± .060 3 PL ± .030 INTERPRET DIM AND TOL PER ASME Y14.5M-1994		APPROVALS		DATE		 MAZZEI INJECTOR CO., LLC 500 ROOSTER DRIVE BAKERSFIELD, CA 93307 PHONE: (661) 363-6500 FAX: (661)363-7500 WWW.MAZZEI.NET					
ANY RECOMMENDATIONS FOR PRODUCT AND/OR SYSTEM DESIGN, WHETHER CONTAINED IN A DOCUMENT, WITHIN THIS DRAWING, COMMUNICATED BY ELECTRONIC MEANS OR GIVEN VERBALLY, ARE INTENDED SOLELY AS GUIDELINES TO ACTUAL SYSTEM DESIGN. SAID RECOMMENDATIONS ARE BASED UPON INFORMATION SUPPLIED BY OTHERS, THE ACCURACY OF WHICH IS BEYOND VERIFICATION BY MAZZEI INJECTOR CO. LLC. THEREFOR MAZZEI CANNOT AND DOES NOT WARRANT THE SUITABILITY OF ITS PRODUCTS FOR A PARTICULAR SERVICE NOR THE PERFORMANCE OF ANY SYSTEM CONTAINING COMPONENTS MADE OR SOLD BY MAZZEI.		THE INFORMATION CONTAINED IN THIS DRAWING IS THE SOLE PROPERTY OF MAZZEI INJECTOR COMPANY LLC. ANY REPRODUCTION IN PART OR AS A WHOLE WITHOUT THE WRITTEN PERMISSION OF MAZZEI IS STRICTLY PROHIBITED.		THIRD ANGLE PROJECTION 		DRAWN: T. JOHNS		8/10/2012				TITLE: DEGAS SEPARATOR; DSF02010ACF000			
DRAWING MAY NOT BE PRINTED FULL SIZE DO NOT SCALE						CHECKED: P. BANKOWSKI		11/28/2012		APPROVED: P. BANKOWSKI				11/28/2012	
				QA: -		CUSTOMER APPROVAL: -		SIZE: B		JOB NO.: NA		DRAWING NUMBER: DSF02010ACF000-SUB		REV: NC	
				CUSTOMER: NA		SCALE: NONE		WEIGHT: 38 LBS		SHEET: 1 OF 2					



(TOP VIEW)



(SIDE VIEW)



(END VIEW)



MAZZEI INJECTOR CO., LLC

500 ROOSTER DRIVE BAKERSFIELD, CA 93307
 PHONE: (661) 363-6500 FAX: (661)363-7500
 WWW.MAZZEI.NET

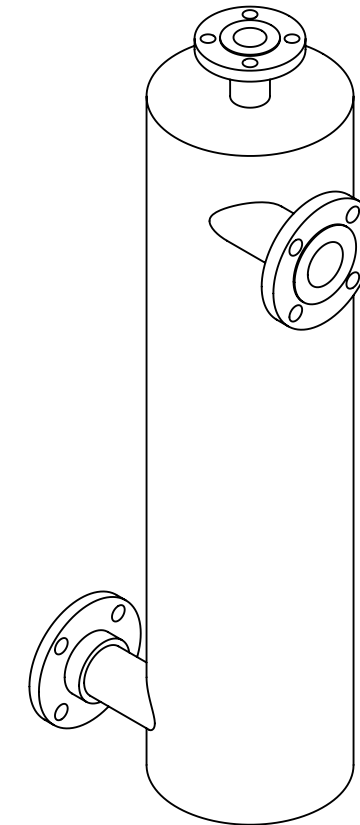
TITLE:
DEGAS SEPARATOR; DSF02010ACF000

SIZE: B	JOB NO.: NA	DRAWING NUMBER: DSF02010ACF000-SUB	REV.: N
SCALE: 1:8	WEIGHT: 38 LBS	SHEET: 2 OF 2	

NOTES:


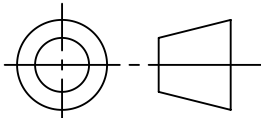
1. MATERIAL OF CONSTRUCTION: CHLORINATED POLYVINYL CHLORIDE (CPVC)/FIBER REINFORCED POLYMER (FRP)
2. MAXIMUM PRESSURE: 80 PSI (5.52 BAR)
3. MAXIMUM OPERATING TEMPERATURE: 73°F (22.8°C) @ MAX. PRESSURE
4. PRESSURE LOSS: 3 - 12 PSID (.2 - .8 BAR) AT RATED FLOW
5. RATED FLOW: 50 - 150 GPM (11 - 34 M³/HR)
6. EMPTY WEIGHT (DRY): APPROXIMATELY 36 LBS. (16.3 KG)
7. WATER VOLUME: 6.5 GALLONS (24.4 LITERS)
8. INLET/OUTLET CONNECTION: 2" NOMINAL DIA., CLASS 150, VAN STONE STYLE FLANGE
9. VENT CONNECTION: 1.25" NOMINAL DIA., CLASS 150, VAN STONE STYLE FLANGE
10. FINISH: FIBERGLASS WRAPPED EXTERIOR ONLY
11. HIGH FREQUENCY SPARK TEST REPORT OF HOT AIR WELDS CAN BE PROVIDED BY MAZZEI UPON REQUEST.

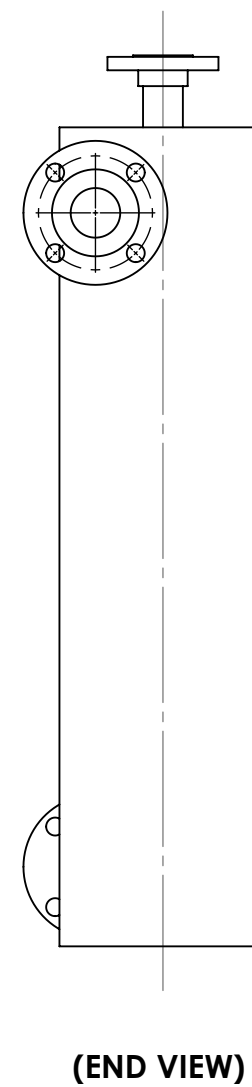
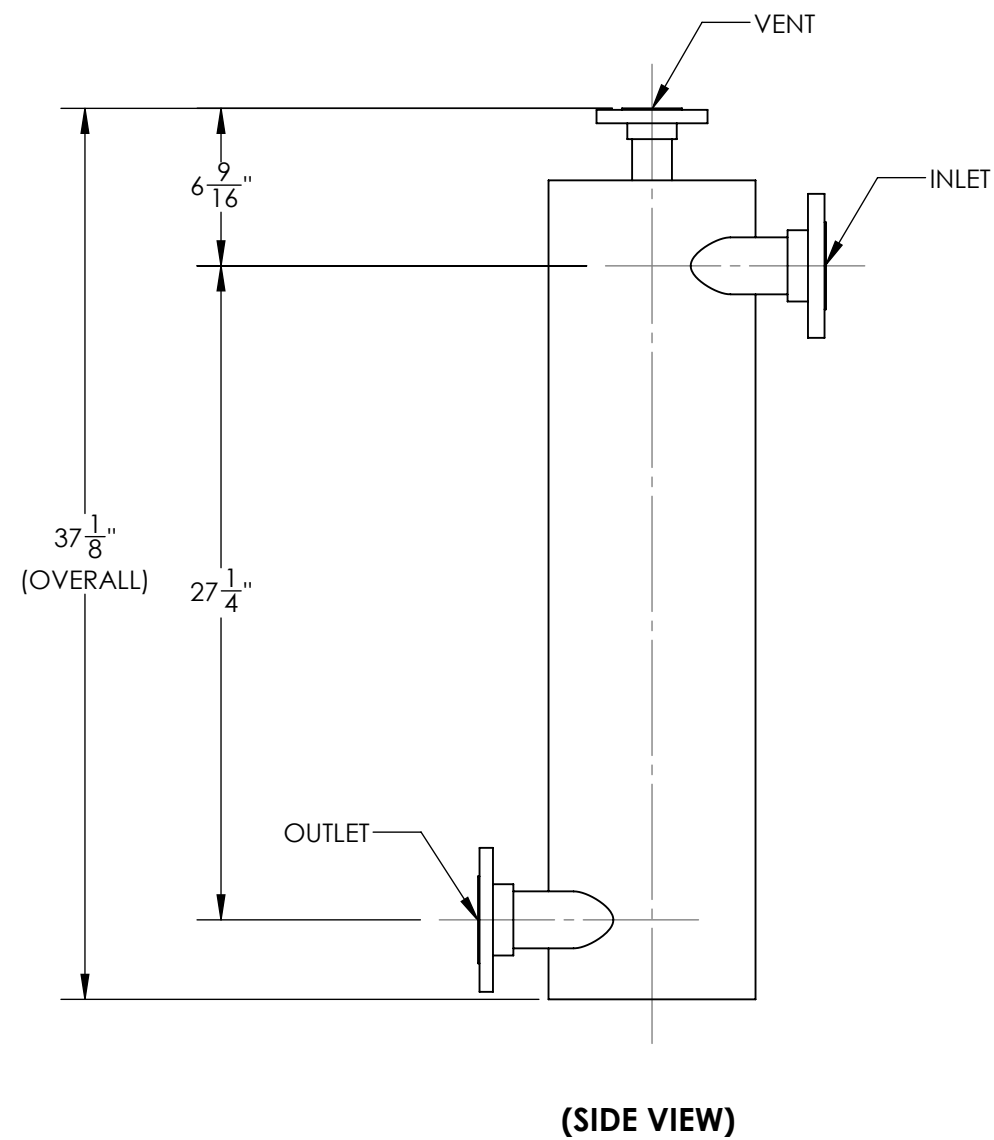
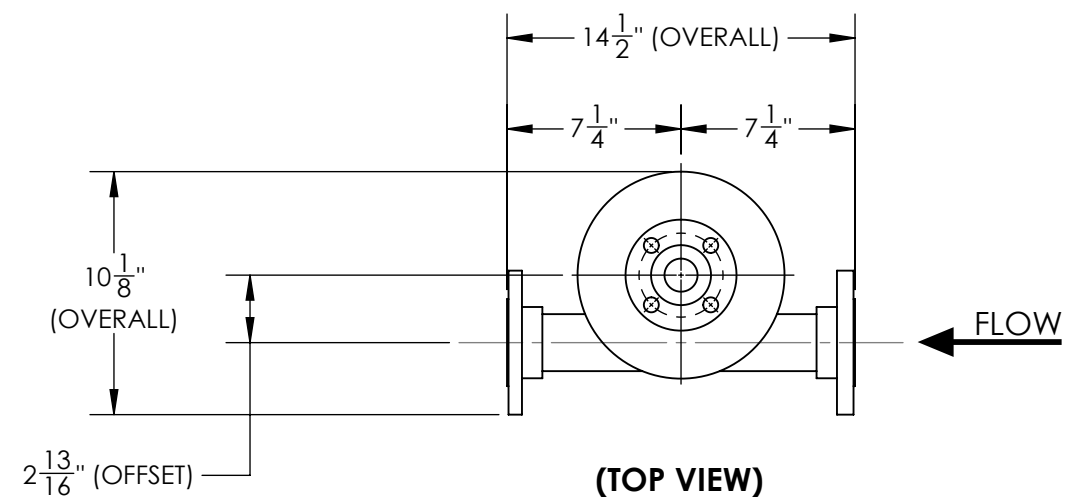
REVISIONS			
REV.	DESCRIPTION	DATE	APPROVED
NC	RELEASED FOR SUBMITTAL.	2/19/2015	J. BENNETT




(ISOMETRIC VIEW)
(FOR REFERENCE ONLY)

SUBMITTAL DRAWING

SUBMITTAL NOTICE		CONFIDENTIALITY NOTICE		UNLESS OTHERWISE SPECIFIED DIM ARE IN INCHES TOL ON ANGLE ± .50° ALL DIMS ± 1" INTERPRET DIM AND TOL PER ASME Y14.5M-1994		APPROVALS		DATE		 MAZZEI INJECTOR CO., LLC 500 ROOSTER DRIVE BAKERSFIELD, CA 93307 PHONE: (661) 363-6500 FAX: (661)363-7500 WWW.MAZZEI.NET					
ANY RECOMMENDATIONS FOR PRODUCT AND/OR SYSTEM DESIGN, WHETHER CONTAINED IN A DOCUMENT, WITHIN THIS DRAWING, COMMUNICATED BY ELECTRONIC MEANS OR GIVEN VERBALLY, ARE INTENDED SOLELY AS GUIDELINES TO ACTUAL SYSTEM DESIGN. SAID RECOMMENDATIONS ARE BASED UPON INFORMATION SUPPLIED BY OTHERS, THE ACCURACY OF WHICH IS BEYOND VERIFICATION BY MAZZEI INJECTOR CO. LLC. THEREFORE MAZZEI CANNOT AND DOES NOT WARRANT THE SUITABILITY OF ITS PRODUCTS FOR A PARTICULAR SERVICE NOR THE PERFORMANCE OF ANY SYSTEM CONTAINING COMPONENTS MADE OR SOLD BY MAZZEI.		THE INFORMATION CONTAINED IN THIS DRAWING IS THE SOLE PROPERTY OF MAZZEI INJECTOR COMPANY LLC. ANY REPRODUCTION IN PART OR AS A WHOLE WITHOUT THE WRITTEN PERMISSION OF MAZZEI IS STRICTLY PROHIBITED.		THIRD ANGLE PROJECTION 		DRAWN: T. JOHNS		2/19/2015				DESCRIPTION: DEGAS SEPARATOR; DSF02013KAAFID			
DRAWING MAY NOT BE PRINTED FULL SIZE DO NOT SCALE						CHECKED: J. PEREZ		2/19/2015		APPROVED: J. BENNETT				2/19/2015	
				CUSTOMER APPROVAL: -		CUSTOMER: N/A		SIZE: B		JOB NO.: N/A				DRAWING NUMBER: DSF02013KAAFID-SUB	
						QA: -				SCALE: NONE		WEIGHT: 36 LBS		SHEET: 1 OF 2	



		MAZZEI INJECTOR CO., LLC 500 ROOSTER DRIVE BAKERSFIELD, CA 93307 PHONE: (661) 363-6500 FAX: (661)363-7500 WWW.MAZZEI.NET	
		DESCRIPTION: DEGAS SEPARATOR; DSF02013KAAFID	
SIZE:	JOB NO.:	DRAWING NUMBER:	REV:
B	N/A	DSF02013KAAFID-SUB	NC
SCALE:	WEIGHT:	SHEET:	
1:8	36 LBS	2 OF 2	